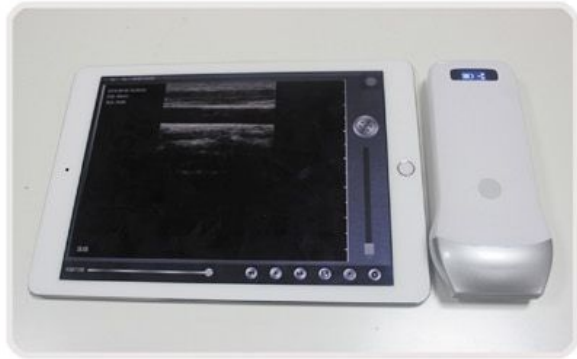


UProbe-2EC2015/B0



UProbe-2L Linear Probe



More information... please browse www.sonostarmed.com

Sonostar Technologies Co., Limited

Headquarters: C Building, #27 Yayingshi Road, Science Town, Guangzhou, China
Parts Factory: First floor, Investment Building, Nanping, Zhuhai, Guangdong
Tel: +86-20-32382095 Fax: +86-20-62614030 Skype: sonostar-ut
www.sonostar.net Email: sonostar@sonostar.net MSN: sonostar@163.com

Note: Sonostar trademarks is protected by Madrid Treaty.



New Tech, New Life

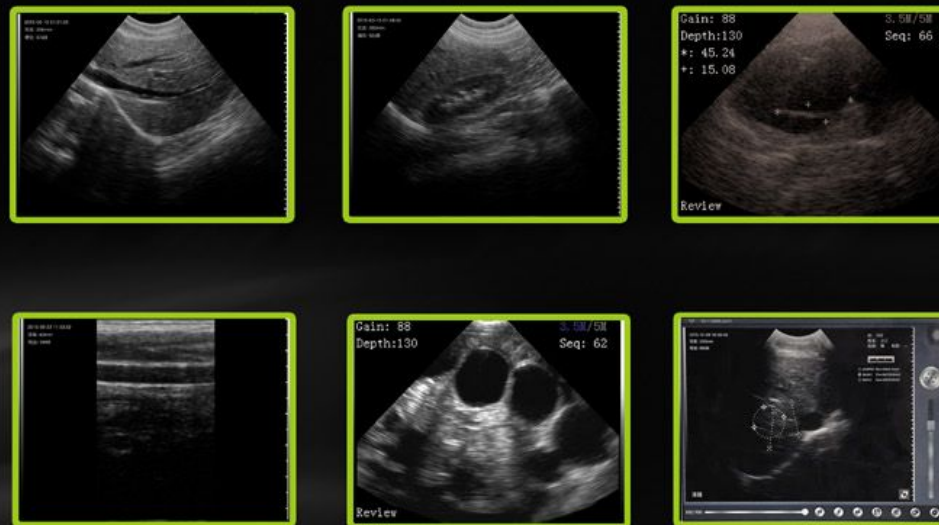
Wireless transmission!



UProbe-2L

Wireless Probe Ultrasound Scanner Convex Linear

- Workable with Tablet or Smart Phone
- Built-in and replaceable battery
- Advanced digital imaging technology, clear image
- High cost-effective
- Wireless connectivity, easy to operate
- Small and light, easy to carry
- Applicable in emergency, clinic, outdoor and vet inspection
- Intelligent terminal platform, powerful expansion functions on application, storage, communication, printing



UProbe-2 is a wireless array probe scanner. This wireless probe scanner with integrated ultrasound circuit boards inside, can wireless connect to the PC Tablet, SmartPhone that after installed ultrasound software, then realize the functions of a ultrasound scanner.

It is so small and smart, convenient for carry and operation.

Application Range:

In emergency clinical, hospital ward inspection, community clinical and outdoor inspect, an easy carried & operated compact ultrasound such as UProbe-2 wireless probe is desired.

In addition, the wireless probe can be conveniently used in surgery without fixing of cables. And by using the disposable protecting cover, it can easily solve the sterilization issue of the probe.

Also for powerful communication capability of the smart terminals, the wireless probe can meet the needs of the telemedicine.

Linear probe also is good for deep venous puncture, nerve block inspect

Specifications:

- Scanning system: convex/linear array scan;
- Frequency: 3.5MHz (UProbe-2C convex array)
7.5MHz (UProbe-2L linear array)
- Depth: 100~200mm, Adjustable
- Field of view(convex array): 80 degree
- Screen: Smart phone or tablet screen
- Supporting system: Apple MacOSx (Android, Windows system version coming soon)
- Display mode: B, B/M
- Frame rate: 12f/s
- Image gray scale: 256 level
- Image Storage: Using intelligent terminal customers to use (mobile phones, Tablet PC) storage devices
- Measure: distance, area, obstetrics and other
- Power: by built-in battery
- Power consumption: 10W (unfreeze) /4W (freeze)
- Battery working time: 3 hours
- Size: 156mm×60mm×24mm
- Weight: 308 gram

Standard Configuration:

- Main host(probe) 1 Unit
- Internal battery and charger cable 1 Set

Options:

- Tablet, Phone
- Wireless charge pad



Work on iPhone