



Specifications of SS-7

Main Features

- High-density wideband convex and linear-array probes make richer images.
- Wideband variable frequency technology meets demand of different customers.
- Four-stage adjustable focusing technology makes overall image uniform and consistent in resolution.
- Powerful measuring and calculation software makes your judgment more accurate.

Performance Specifications

- Scanning mode: Electronic liner array, electronic convex array Probe
- Display mode: B, B/B,4B, B/M, M
- Gray scale of image: 256 levels
- Image magnification: $\times 1.0$ 、 $\times 1.2$ 、 $\times 1.5$ 、 $\times 2.0$
- Focus mode: Acoustical lens, variable aperture, multistage dynamic electronic focusing (four-stage focusing, optional focuses)
- Max display depth: 240 mm
- Monitor: 10" monitor
- System: PAL-D system, connectable with a large-screen monitor or a video image printer
- Image flip: Left-right, up-down, polarity (black/white) flip
- Geometrical position accuracy: $H \leq 10\%$, $V \leq 5\%$
- Cine: 256 frames
- Depth improvement: Supporting depth improvement (scrolling function)
- Body mark: Display of 30 body mark
- Real-time clock: Real-time display of date, time and week
- Cursor: Controlled by the trackball
- Display information: Time, date, week, doctor, medial record ID, age, sex, focus, body mark, probe frequency, measured value, etc.
- Measurement: Automatic measurement of distance, circumference, area, volume, heart rate, speed, weight, gestational age, EDD, AFI calculation, etc.
- Keyboard: Foldable and portable keyboard
- N.W.: 12KG (inc. one probe)
- G.W.: 14KG
- Dimensions: 522mm \times 365mm \times 420mm

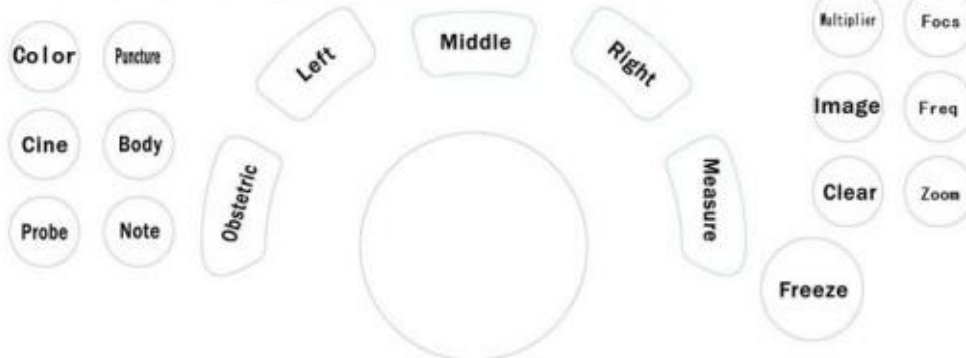
Standard:

Electronic convex probe 35C60H (2.0/3.5 /5.0 MHz R60mm)

Option:

Electronic convex probe 65C13H (5.0/6.5 /8.0 MHz R13mm) ;

Electronic high frequency Linear probe 75L40H (5.0/7.5/10.0MHz L40mm)



Sonostar Technologies Co., Limited

Web: <http://www.sonostar.net>

Mail: sonostar@sonostar.net

MSN: sonostar@163.com

Skype: sonostar-ut