



Dedicated to the popularization of ultrasonic technology

SS-600(for human)/**SS-600V**(for veterinary)

Trolley Ultrasound Diagnosis B Scanner



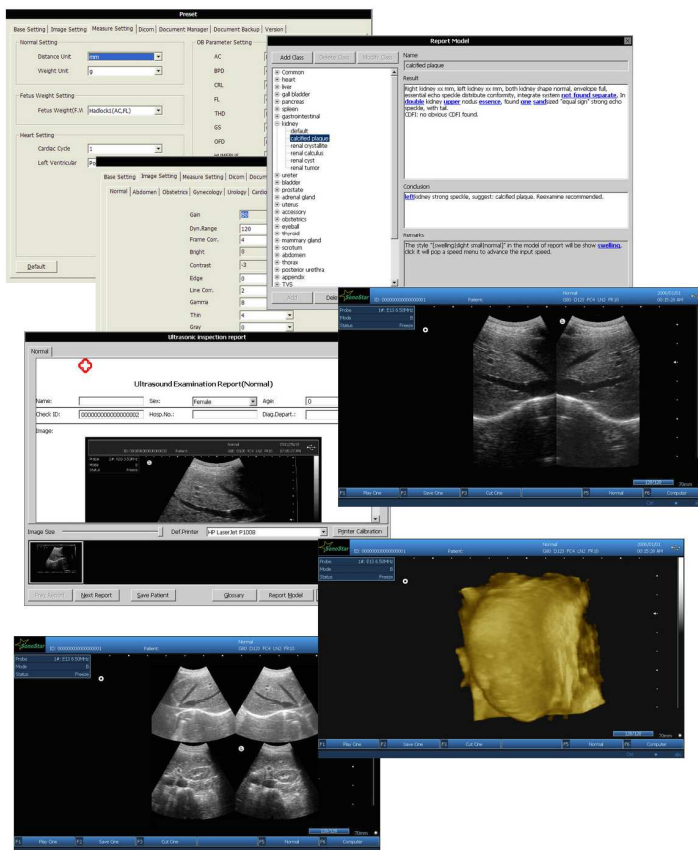
Good appearance!

Feature:

- Full digital imaging technology
- Crystal-clear Image
- Computer platforms, Abundant functions
- Powerful image and report management
- 15 inch color LCD monitor
- Outside battery(option)
- DICOM display and transfer
- Pretty and new appearance
- Large volume Storage and cine loop
- Broadband Multi-frequency probes
- 8 segment TGC, 16 step zoom
- Complete application software packages
- 4 probe connector
- Compatible with laser/inkjet printers
- 3D Image Function(optional)

Specification:

- D-Maximum Scanning Depth 250mm
- Zoom: 10 ratio, 1.5, 2.0, 2.5, 3.0, 3.5, 4.0, 4.5, 5.0, 5.5, 6.0
- Cine Loop 1024 frames
- Image processing: Pre-processing, after-processing, dynamic range, frame rate, line average, edge; contrast, brightness, γ revision. enhancement, Black/White inversion; Gray scale adjustment,
- Gain: gain: adjustable between 0-100dB; Time gain control(TGC): 8 segment adjustment, B, M adjustment separately.
- Supported output apparatus: U-Disk, Laser/ink printer, video printer, VGA
- Measurement and calculation(human):
 B mode: distance, circumstance, area, volume, angle, ratio, stenosis, profile, histogram;
 M mode: heart rate, time, distance, slope and stenosis;
 Gynecology measurement: Uterus, cervix, endometrium, L/R ovary;
 Obstetric: gestation age, fetal weight, AFI; Cardiology: LV, LV function, LVPW, RVAWT;
 Urology: transition zone volume, bladder volume, RUV, prostate, kidney; Small parts: optic, thyroid, jaw and face.
- Measurement and calculation(veterinary):
 Cattle: BPD, CRL, TD; Horse: GA; Dog: GS; Cat: HD, BD; Sheep: BPD, CRL, TD
- Monitor: 15 inch color LCD monitor
- Probe Connector: 4



Sonostar Technologies Co., Limited

Address: #31, Shuiwan road, Jida, Zhuhai, Guangdong, China

Tel: +86 13168355297 MSN: sonostar@163.com Skype: sonostar-ut

Web: www.sonostar.net Mail: sonostar@sonostar.net

